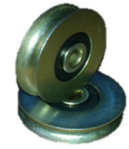




ROUND BELT PULLEYS / IDLERS

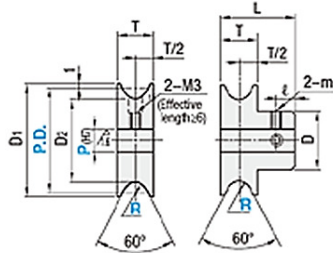


TYPE – U GROOVE TYPE

ITEM	NO OF GROOVES	DIA	TYPE	HUB	BORE TYPE	COATING
ROPU	2 3 4 5 6	" - "	"U" - U GROOVE "W" - WIDE GROOVE "T" - TRAPEZOID GROOVE	- NO HUB "1H" - ONE SIDE HUB "2H" - TWO SIDE HUB	- PILOT BORE "φN" - DIA WITH NEW JIS "φO" - DIA WITH OLD JIS "T" - SCRUB SCREW TYPE "S" - SPLIT HUB TYPE "B" - BEARING INSERT	"WZ" - WHITE ZINC "GZ" - GOLD ZINC "B" - BLACKENING "P" - PHOSPATING "C" - CHROME COATED "N" - NICKEL COATED

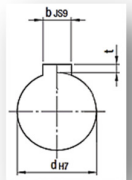
A Shape

B Shape With Boss \sqrt{r} (\sqrt{r})



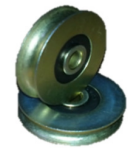
SHAFT HOLE SPECIFICATIONS	
ROUND HOLE + TAP	NEW JIS KEY + TAP

Key Groove Dimension							
New JIS (B1301) Key Groove Dimensions							
Nominal	dH7	bJS9	t	Tolerance			
N8	8	0.015	3	±0.0125	1.4	0.1	
N10	10	0			0		
NK10	10	4	±0.0150	1.8	2.3	0	
N12	12						0.018
N15	15						0
N20	20	0.021	6	±0.0180	2.8	0	
N30	30	0					
N40	40	0.025	12	±0.0215	3.3	0.2	
		0			0		



Part Number	Belt		R	Shaft Hole Specification/Inner Diameter Selection			D1	D2	h	W	T	L	#L#	D	m	Corresponding Belt Diameter	
	Type	P.D.		Trapezoid	U Groove	H-P(H7)											N(New JIS)
ROPU	*15	1	4~7	-	-	-	17	13	1	2.2	5	11	3	12	M3	2	
	*20						22	18						16			
	*30						32	28						20			
	*40						42	38						20			
	20	1.5	4~12	8~10	-	-	-	22	17	1.5	3.3	10	16	3	16	M3	3
	30							32	27						20		
	40							42	37						20		
	45							47	42						25		
	60	62	57	25													
	18	2	5~12	8~10	-	-	-	20	14	2	4.4	10	16	3	16	M3	4
	23							25	19						20		
	28							30	24						20		
	30							32	26						20		
	40	42	36	25													
	45	47	41	25													
	48	50	44	25													
	60	62	56	25													
	80	82	76	25													
	28	2.5	5~12	8~10	-	-	-	30	23	2.5	5.5	10	16	3	20	M3	5
	40							42	35						20		
	48							50	43						20		
	50							52	45						20		
	60	62	55	25													
	75	77	70	25													
	80	82	75	25													
	28	3	5~12	8~10	-	-	-	30	22	3	6.6	10	16	3	20	M3	6
	38							40	32						20		
	48							50	42						20		
	50							52	44						20		
	58	60	52	25													
	60	62	54	25													
	75	77	69	25													
	80	82	74	25													
	95	97	89	25													
	100	102	94	25													
	50	4	5~20	8~20	10	-	-	52	42	4	8.8	12	24	6	30	M4	8
	60							62	52						30		
	80							82	72						30		
	100							102	92						30		
	120	122	112	30													
60	5	5~20	8~20	10	-	-	62	50	5	11	15	27	6	30	M4	10	
80							82	70						30			
100							102	90						30			
120							122	110						30			
140	142	130	30														

ROUND BELT PULLEYS / IDLERS



TYPE – U GROOVE TYPE-WITH LOCK

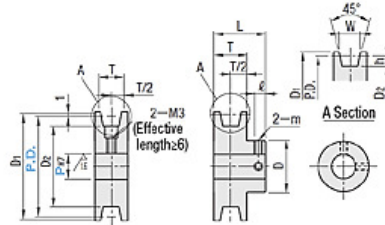
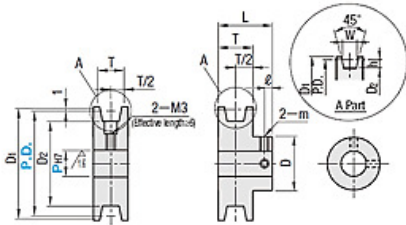
ITEM	NO OF GROOVES	DIA	TYPE	HUB	BORE TYPE	COATING
ROPU	2 3 4 5 6	" - "	"U" - U GROOVE "W" - WIDE GROOVE "T" - TRAPEZOID GROOVE	- NO HUB "1H" - ONE SIDE HUB "2H" - TWO SIDE HUB	- PILOT BORE "φN" - DIA WITH NEW JIS "φO" - DIA WITH OLD JIS "T" - SCRUB SCREW TYPE "S" - SPLIT HUB TYPE "B" - BEARING INSERT	"WZ" - WHITE ZINC "GZ" - GOLD ZINC "B" - BLACKENING "P" - PHOSPATING "C" - CHROME COATED "N" - NICKEL COATED

A Part

B Part (With Boss)

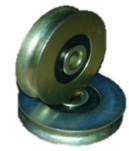
A Shape

B Shape (With Boss)



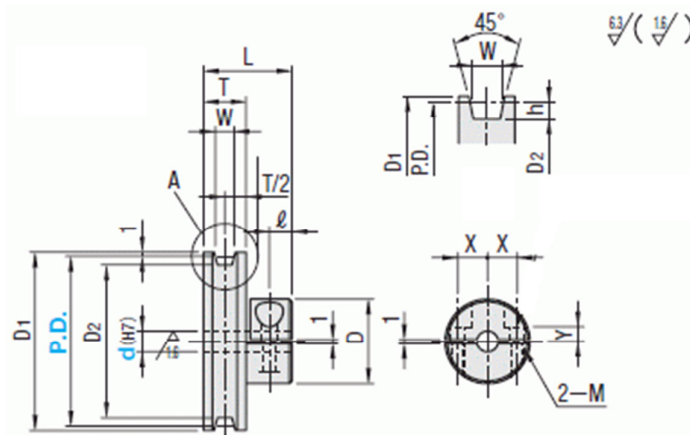
Part Number	Belt Radius	R	Shaft Hole Specification/Inner Diameter Selection			D1	D2	h	W	T	L	#L#	D	m	Corresponding Belt Diameter		
			1mm Increment	Selectable													
Type	P.D.	Trapezoid	U Groove	H·P(H7)	N(New JIS)	C(Oid JIS)											
ROPU	*15	1	U Groove	4~7	-	-	17	13	1	2.2	5	11	3	12	M3	2	
	*20			4~12	8~10	22	18	16									
	*30			4~12	8~10	32	28	20									
	*40			4~12	8~10	42	38	25									
	20	1.5	U Groove	4~12	8~10	-	22	17	1.5	3.3	10	16	3	16	M3	3	
	30			5~12	8~10	32	27	20									
	40			5~12	8~20	10	42	37									25
	45			5~20	8~20	10	47	42									25
	60	2	U Groove	5~20	8~20	-	62	57	2	4.4	10	20	5	25	M4	4	
	18			5~12	8~10	-	20	14									16
	23			5~12	8~10	-	25	19									16
	28			5~12	8~10	-	30	24									16
	30	2.5	U Groove	5~12	8~10	-	32	26	2.5	5.5	10	20	3	20	M3	5	
	40			5~20	8~20	10	42	36									25
	45			5~20	8~20	10	47	41									25
	48			5~20	8~20	10	50	44									25
	60	3	U Groove	5~20	8~20	-	62	56	3	6.6	10	20	5	25	M4	6	
	75			5~12	8~10	-	82	76									20
	80			5~12	8~10	-	82	75									20
	80			5~12	8~10	-	97	89									20
	95	4	U Groove	5~20	8~20	-	102	94	4	8.8	12	24	6	30	M4	8	
	100			5~20	8~20	10	52	42									30
	50			5~20	8~20	10	62	52									30
	60			5~20	8~20	10	82	72									30
	100	5	U Groove	5~20	8~20	-	102	92	5	11	15	27	6	30	M4	10	
	60			5~20	8~20	10	62	50									30
	80			5~20	8~20	10	82	70									30
	100			5~20	8~20	10	102	90									30
	120	5	U Groove	5~20	8~20	-	122	110	5	11	15	27	6	30	M4	10	
	140			5~20	8~20	10	142	130									30

ROUND BELT PULLEYS / IDLERS



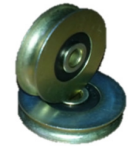
TYPE – SPLIT HUB TYPE

ITEM	NO OF GROOVES	DIA	TYPE	HUB	BORE TYPE	COATING
ROPU	2 3 4 5 6	" - "	"U" - U GROOVE "W" - WIDE GROOVE "T" - TRAPEZOID GROOVE	- NO HUB "1H" - ONE SIDE HUB "2H" - TWO SIDE HUB	- PILOT BORE "φN" - DIA WITH NEW JIS "φO" - DIA WITH OLD JIS "T" - SCRUB SCREW TYPE "S" - SPLIT HUB TYPE "B" - BEARING INSERT	"WZ" - WHITE ZINC "GZ" - GOLD ZINC "B" - BLACKENING "P" - PHOSPATING "C" - CHROME COATED "N" - NICKEL COATED



Part Number		Belt Radius	d(H7) Selection								D	D1	D2	h	W	L	T	ℓ	X	Y	M	Corresponding Belt Diameter	
Type	P.D.	Trapezoid	4	5	6	6.35	8	10	11	12													
ROPU	20	1	4	5							16	22	18	1	2.2	11	5	5	3	M3	2		
	30		4	5	6	6.35	8			20	32	28	7					3.5					
	40										42	38											
	30	1.5		5	6	6.35	8				20	32	27	1.5	3.3	16	10	2.5	7	3.5	M3	3	
	40										42	37											
	45										47	42							4.5	9	4.5		M4
	60		5	6	6.35	8	10	11	12	25	62	57											
	23										25	19											
	28	2		5	6	6.35	8				20	30	24	2	4.4	16	10	2.5	7	3.5	M3	4	
	30										32	26											
	40										42	36											
	45										47	41											
	48										50	44											
	60		5	6	6.35	8	10	11	12	25	62	56							4.5	9	4.5		M4
	80										82	76											
	28	2.5		5	6	6.35	8				20	30	23	2.5	5.5	16	10	2.5	7	3.5	M3	5	
	40										42	35											
	48										50	43											
	50										52	45											
	60		5	6	6.35	8	10	11	12	25	62	55							4.5	9	4.5		M4
	75										77	70											
	80										82	75											
	28	3		5	6	6.35	8				20	30	22	3	6.6	20	10	2.5	7	3.5	M3	6	
	38										40	32							6.5				
48										50	42												
50										52	44												
58										60	52							4.5	9	4.5	M4		
60	5		6	6.35	8	10	11	12	25	62	54												
75										77	69												
95										97	89												
100									102	94													

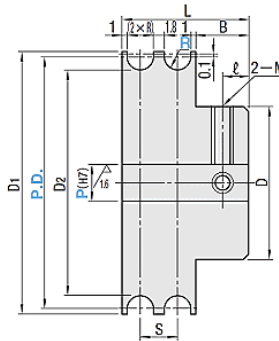
ROUND BELT PULLEYS / IDLERS



TYPE – DOUBLE GROOVE TYPE

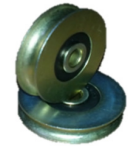
ITEM	NO OF GROOVES	DIA	TYPE	HUB	BORE TYPE	COATING
ROPU	2 3 4 5 6	" - "	"U" - U GROOVE "W" - WIDE GROOVE "T" - TRAPEZOID GROOVE	- NO HUB "1H" - ONE SIDE HUB "2H" - TWO SIDE HUB	- PILOT BORE "φN" - DIA WITH NEW JIS "φO" - DIA WITH OLD JIS "T" - SCRUB SCREW TYPE "S" - SPLIT HUB TYPE "B" - BEARING INSERT	"WZ" - WHITE ZINC "GZ" - GOLD ZINC "B" - BLACKENING "P" - PHOSPATING "C" - CHROME COATED "N" - NICKEL COATED

6.3 / (1/16)



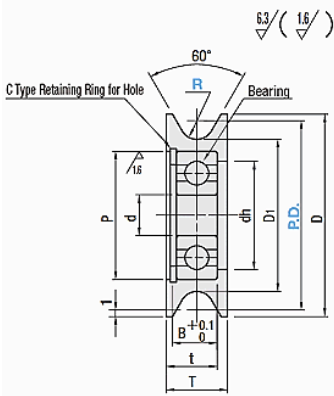
Part Number		R	Shaft Hole Spec. - Inner Dia. P(H7) Specification 1mm Increment	S	D	D1	D2	L	#L#	B	2-M	Accessories	Applicable
Type	P.D.										(Coarse)	Set screws	Round Belt Diameter
ROPU	15	1.1	-38	4	12	17	13	14	3	5.8	M3	M3×3	2
	20		4~10										
	30		4~12										
	20	1.6	-310	5	16	22	17	16	3	5.8	M3	M3×3	3
	30		5~12										
	40		5~20										
	23	2.1	5~12	6	20	25	19	18	3	5.8	M3	M3×3	4
	28												
	30												
	40												
	45	5~18											
	48	5~20											
	28	2.6	5~12	7	20	30	23	20	3	5.8	M3	M3×3	5
	40		5~20										
	50		5~20										
	28	3.1	5~20	8	22	30	22	22	3	5.8	M3	M3×3	6
	38												
	48												
	50												
	60												
	75												
	100												
	50	4.1	5~20	10	30	52	42	30	5	9.8	M5	M5×4	8
	60												
100													
60	5.1	5~20	12	34	62	50	34	5	9.8	M5	M5×4	10	
100													
140													

ROUND BELT PULLEYS / IDLERS



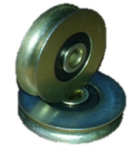
TYPE – IDLERS WIDE TYPE (BEARING INSERT TYPE)

ITEM	NO OF GROOVES	DIA	TYPE	HUB	BORE TYPE	COATING
ROPU	2 3 4 5 6	" - "	"U" - U GROOVE "W" - WIDE GROOVE "T" - TRAPEZOID GROOVE	- NO HUB "1H" - ONE SIDE HUB "2H" - TWO SIDE HUB	- PILOT BORE "φN" - DIA WITH NEW JIS "φO" - DIA WITH OLD JIS "T" - SCRUB SCREW TYPE "S" - SPLIT HUB TYPE "B" - BEARING INSERT	"WZ" - WHITE ZINC "GZ" - GOLD ZINC "B" - BLACKENING "P" - PHOSPATING "C" - CHROME COATED "N" - NICKEL COATED



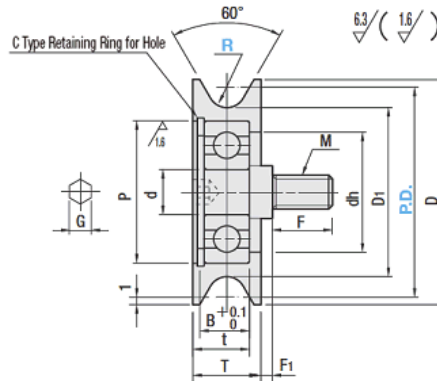
Part Number		R	d	P	dh	D	D1	T	t	B	Bearing Used	M	G	F	F1	Applicable Round Belt Diameter		
Type	P.D.																	
ROPU	15	1	3	10	8	17	13	10	6.5	5	623ZZ	-	-	-	-	2		
	20		5	16	13	22	18		7.5	6	625ZZ							
	30					32	28		12	9								
	20	1.5	4	13	11	22	17	10	7.5	6	624ZZ	-	-	-	-	3		
	30		6	19	16	32	27	12	9	7	626ZZ	M6	3	8	1			
	23	2	5	16	13	25	19	10	7.5	6	625ZZ	-	-	-	-	4		
	28		6	19	16	30	24	12	9	7	626ZZ	M6	3	8	1			
	30					32	26											
	40		10	26	23	42	36	15	11.5	9.2	6000ZZ	M8	5	10				
	48		12	28	25	50	44				6001ZZ	M10	6	12	1.5			
	60				62	56												
	23	2.5	5	16	13	25	18	10	7.5	6	625ZZ	-	-	-	-	5		
	28		6	19	16	30	23	12	9	7	626ZZ	M6	3	8	1			
	40		10	26	23	42	35	15	11.5	9.2	6000ZZ	M8	5	10				
	48					50	43				6001ZZ	M10	6	12	1.5			
	50		12	28	25	52	45											
	60				62	55												
	28	3	6	19	16	30	22	12	9	7	626ZZ	M6	3	8	1	6		
	38		10	26	23	40	32	15	11.5	9.2	6000ZZ	M8	5	10				
	48					50	42				6001ZZ	M10	6	12	1.5			
	50					52	44											
	60		12	28	25	62	54	16	12.5	10.2	6001ZZ	M10	6	12	1.5			
	80					82	74				6002ZZ		6	1				
	100				102	94												
	50	4	12	28	25	52	42	15	11.5	9.2	6001ZZ	M10	6	12	1.5	8		
	60					62	52											
	80					82	72											
	100		15	32	28	102	92	16	12.5	10.2	6002ZZ							6
	120				122	112												
	60	5	12	28	25	62	50	15	11.5	9.2	6001ZZ	M10	6	12	1.5	10		
80					82	70												
100					102	90												
120	15		32	28	122	110	16	12.5	10.2	6002ZZ							6	1
140					142	130												

ROUND BELT PULLEYS / IDLERS



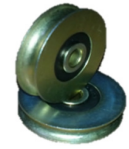
TYPE – IDLERS WIDE TYPE (BEARING INSERT PIN TYPE)

ITEM	NO OF GROOVES	DIA	TYPE	HUB	BORE TYPE	COATING
ROPU	2 3 4 5 6	" - "	"U" - U GROOVE "W" - WIDE GROOVE "T" - TRAPEZOID GROOVE	- NO HUB "1H" - ONE SIDE HUB "2H" - TWO SIDE HUB	- PILOT BORE "φN" - DIA WITH NEW JIS "φO" - DIA WITH OLD JIS "T" - SCRUB SCREW TYPE "S" - SPLIT HUB TYPE "B" - BEARING INSERT	"WZ" - WHITE ZINC "GZ" - GOLD ZINC "B" - BLACKENING "P" - PHOSPATING "C" - CHROME COATED "N" - NICKEL COATED



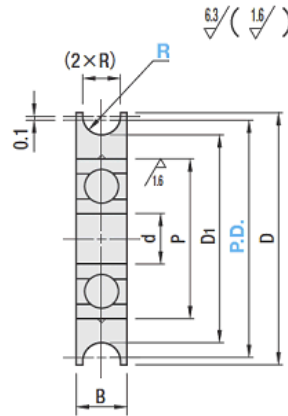
Part Number		R	d	P	dh	D	D1	T	t	B	Bearing Used	M	G	F	F1	Applicable Round Belt Diameter											
Type	P.D.																										
ROPU	30	1.5	6	19	16	32	27	12	9	7	626ZZ	M6	3	8	1	3											
	28	2	6	19	16	30	24	12	9	7	626ZZ	M6	3	8	1	4											
	30					32	26																				
	40					42	36																				
	48	2.5	10	26	23	50	44	15	11.5	9.2	6000ZZ	M8	5	10	1.5	5											
	60					62	56																				
	28					6	19										16	30	23	12	9	7	626ZZ	M6	3	8	1
	40	3	10	26	23	42	35	15	11.5	9.2	6000ZZ	M8	5	10	1.5	6											
	48					50	43																				
	50					52	45																				
	60	4	12	28	25	62	55	15	11.5	9.2	6001ZZ	M10	6	12	1.5	8											
	28					6	19										16	30	22	12	9	7	626ZZ	M6	3	8	1
	38					10	26										23	40	32	15	11.5	9.2	6000ZZ	M8	5	10	1.5
	48	12	28	25	50	42																					
	50				52	44																					
	60				62	54																					
	80	5	15	32	28	82	74	16	12.5	10.2	6002ZZ	M10	6	12	1	10											
	100					102	94																				
	50					12	28										25	52	42	15	11.5	9.2	6001ZZ	M10	6	12	1.5
	60	62	52																								
	80	82	72																								
	100	15	32	28	25	102	92	16	12.5	10.2	6002ZZ	M10	6	12	1	10											
	120					122	112																				
	60					12	28										25	62	50	15	11.5	9.2	6001ZZ	M10	6	12	1.5
	80	82	70																								
	100	102	90																								
	120	15	32	28	25	122	110	16	12.5	10.2	6002ZZ	M10	6	12	1	10											
	140					142	130																				

ROUND BELT PULLEYS / IDLERS



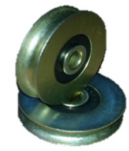
TYPE – IDLERS WIDE TYPE (BEARING INSERT PRESS FIT TYPE)

ITEM	NO OF GROOVES	DIA	TYPE	HUB	BORE TYPE	COATING
ROPU	2 3 4 5 6	" - "	"U" - U GROOVE "W" - WIDE GROOVE "T" - TRAPEZOID GROOVE	- NO HUB "1H" - ONE SIDE HUB "2H" - TWO SIDE HUB	- PILOT BORE "φN" - DIA WITH NEW JIS "φO" - DIA WITH OLD JIS "T" - SCRUB SCREW TYPE "S" - SPLIT HUB TYPE "B" - BEARING INSERT	"WZ" - WHITE ZINC "GZ" - GOLD ZINC "B" - BLACKENING "P" - PHOSPATING "C" - CHROME COATED "N" - NICKEL COATED



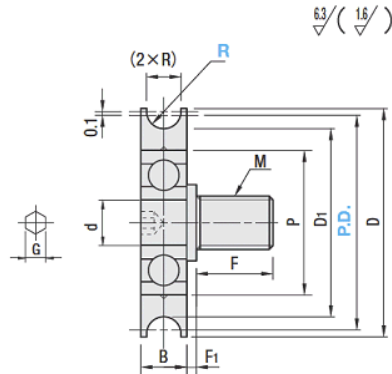
Part Number		R	F	d	P	D	D1	B	Bearings used	M	G	F1	Applicable	
Type	P.D.												Round Belt Diameter	
ROPU	15	1.1	-	4	11	17	13	4	694ZZ	-	-	-	2	
	20				13	21	18	5	624ZZ					
	30				16	32	28		625ZZ					
	20	1.6	-	4	13	22	17	5	624ZZ	-	-	-	3	
	23				16	25	20		625ZZ					
	30				32	27								
	18	2.1	-	5	11	20	14	5	685ZZ	-	-	-	4	
	23				15	25	19		696ZZ					3
	28		8	6	19	30	24	6	626ZZ	M6	3	1		
	30					32	26		698ZZ					4
	40		12	12	24	42	36	6	6901ZZ	M10	6	1.5		
	48					50	44							
	28	2.6	8	6	19	30	23	6	626ZZ	M6	3	1	5	
	40					42	35		698ZZ					4
	48					50	43		6901ZZ					6
	50	3.1	12	12	24	52	45	8	6901ZZ	M10	6	1.5	6	
	38					40	32		628ZZ					M8
	48	4.1	10	8	24	50	42	8	6001ZZ	M10	6	1.5	6	
	50					52	44		6904ZZ					
	60					62	54							
	100	5.1	12	20	42	37	102	94	9	6904ZZ	M10	6	1.5	8
	50					52	42	6201ZZ						
	60					62	52							
	60	5.1	12	20	42	62	50	12	6004ZZ	M10	6	1.5	10	
80	82					70								
*140					142	130								

ROUND BELT PULLEYS / IDLERS



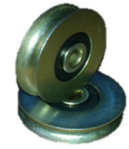
TYPE – IDLERS WIDE TYPE (BEARING & PIN PRESS FIT TYPE)

ITEM	NO OF GROOVES	DIA	TYPE	HUB	BORE TYPE	COATING
ROPU	2 3 4 5 6	" - "	"U" - U GROOVE "W" - WIDE GROOVE "T" - TRAPEZOID GROOVE	- NO HUB "1H" - ONE SIDE HUB "2H" - TWO SIDE HUB	- PILOT BORE "φN" - DIA WITH NEW JIS "φO" - DIA WITH OLD JIS "T" - SCRUB SCREW TYPE "S" - SPLIT HUB TYPE "B" - BEARING INSERT	"WZ" - WHITE ZINC "GZ" - GOLD ZINC "B" - BLACKENING "P" - PHOSPATING "C" - CHROME COATED "N" - NICKEL COATED



Part Number		R	F	d	P	D	D1	B	Bearings used	M	G	F1	Applicable
Type	P.D.												Round Belt Diameter
ROPU	23	2.1	8	6	15	25	19	6	696ZZ	M6	3	1	4
	28				19	30	24		626ZZ		3		
	30		8	32	26	698ZZ	4						
	40		12	12	24	42	36		6901ZZ	M10	6		
	48	2.6	8	8	19	30	23	6	626ZZ	M6	3	1	5
	28					42	35		698ZZ		4		
	48		50	43	6901ZZ	M10	6		1.5				
	50		12	12	24	52	45		628ZZ	M8	4		
	38	3.1	10	8	24	40	32	8	6001ZZ	M10	6	1.5	6
	48					50	44		62				
	50		12	12	28	52	44		6904ZZ				
	60					62	54						
	100	4.1	12	12	32	52	42	10	6201ZZ	M10	6	1.5	8
	50					62	52						
	60					62	50						
60	5.1	12	20	42	62	50	12	6004ZZ	M10	6	1.5	10	
80					82	70							

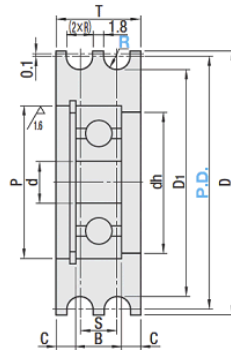
ROUND BELT PULLEYS / IDLERS



TYPE – IDLERS DOUBLE GROOVE TYPE (BEARING INSERT TYPE)

ITEM	NO OF GROOVES	DIA	TYPE	HUB	BORE TYPE	COATING
ROPU	2 3 4 5 6	" - "	"U" - U GROOVE "W" - WIDE GROOVE "T" - TRAPEZOID GROOVE	- NO HUB "1H" - ONE SIDE HUB "2H" - TWO SIDE HUB	- PILOT BORE "φN" - DIA WITH NEW JIS "φO" - DIA WITH OLD JIS "T" - SCRUB SCREW TYPE "S" - SPLIT HUB TYPE "B" - BEARING INSERT	"WZ" - WHITE ZINC "GZ" - GOLD ZINC "B" - BLACKENING "P" - PHOSPATING "C" - CHROME COATED "N" - NICKEL COATED

6.3 / (1.8 /)

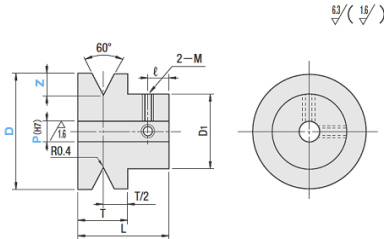


Part Number	Type	P.D.	R	S	d	P	dh	D	D1	T	B	C	Bearing Used	Applicable
													Bearing No.	Round Belt Diameter
15	ROPU	1.1	4	3	10	8	17	13	9	4	2.5	623ZZ	2	
20														624ZZ
30														626ZZ
20	1.6	5	4	13	11	22	17	11	5	3	624ZZ	3		
30													626ZZ	
40													6000ZZ	
45	2.1	6	6	10	26	23	42	37	14	8	3	6000ZZ	4	
23														696ZZ
28														626ZZ
30	2.6	7	8	19	16	30	24	13	6	3.5	626ZZ	4		
40													6000ZZ	
48													6000ZZ	
28	3.1	8	7	8	19	16	30	23	17	6	5.5	626ZZ	5	
40														6000ZZ
50														6201ZZ
28	4.1	10	10	12	32	27	40	32	18	8	5	6000ZZ	6	
38														6000ZZ
48														6000ZZ
50	5.1	12	12	32	27	52	44	18	10	4	6201ZZ	6		
60													6201ZZ	
75													6201ZZ	
100	5.1	12	15	35	30	102	94	25	11	7	6202ZZ	10		
50													6201ZZ	
60													6201ZZ	
100	5.1	12	15	35	30	102	90	25	11	7	6202ZZ	10		
60													6201ZZ	
140													6202ZZ	

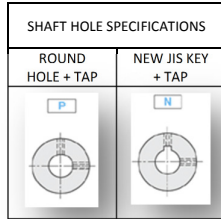
V BELT PULLEYS / IDLERS



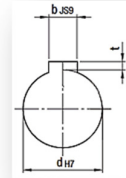
ITEM	NO OF GROOVES	DIA	HUB	BORE TYPE	COATING
VPU	2 3 4 5 6	" - "	- NO HUB "1H" - ONE SIDE HUB "2H" - TWO SIDE HUB	- PILOT BORE "φN" - DIA WITH NEW JIS "φO" - DIA WITH OLD JIS "T" - SCRUB SCREW TYPE "S" - SPLIT HUB TYPE "B" - BEARING INSERT	"WZ" - WHITE ZINC "GZ" - GOLD ZINC "B" - BLACKENING "P" - PHOSPATING "C" - CHROME COATED "N" - NICKEL COATED



15/15



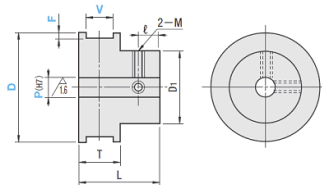
Nominal	Key Groove Dimension				t Tolerance	
	dH7	bJS9	New JIS (B1301) Key Groove Dimensions			
N8	8	0.015	3	±0.0125	1.4	0.1
N10	10	0			0	
NK10	10		4	±0.0150	1.8	
N12	12	0.018				
N15	15	0			5	2.3
N20	20	0.021	6	±0.0180	2.8	
N30	30	0			8	
N40	40	0.025	12	±0.0215	3.3	0.2
		0			0	



Part Number	Z	P(H7)							D1	L	T	ℓ	M	
Type	D	Groove Depth	Selection											
VPU	15	4	4	5					12	13	7	3	M3	
	20		4	5	6	6.35	8	15						
	30		4	5	6	6.35	8	20						
	40		4	5	6	6.35	8	20						
	20	5	4	5	6	6.35	8	10	15	14	8	3	M3	
	30		5	6	6.35	8	20							
	40		5	6	6.35	8	10	20						
	50		5	6	6.35	8	10	25						
	40	7	5	6	6.35	8	10		20	18	12	3	M3	
	50		5	6	6.35	8	10	12						
	60		5	6	6.35	8	10	12						
	50	9	5	6	6.35	8	10	12	25	24	14	5	M4	
	60		5	6	6.35	8	10	12						
	100		5	6	6.35	8	10	12						

H GROOVE PULLEYS / IDLERS

15/15



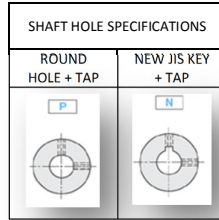
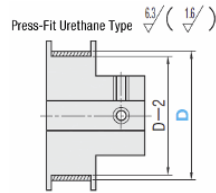
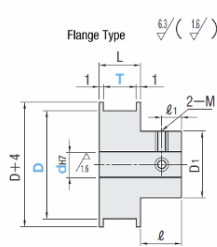
ITEM	NO OF GROOVES	DIA	HUB	BORE TYPE	COATING
HPU	2 3 4 5 6	" - "	- NO HUB "1H" - ONE SIDE HUB "2H" - TWO SIDE HUB	- PILOT BORE "φN" - DIA WITH NEW JIS "φO" - DIA WITH OLD JIS "T" - SCRUB SCREW TYPE "S" - SPLIT HUB TYPE "B" - BEARING INSERT	"WZ" - WHITE ZINC "GZ" - GOLD ZINC "B" - BLACKENING "P" - PHOSPATING "C" - CHROME COATED "N" - NICKEL COATED

Part Number	V	P(H7)							F	D1	L	T	ℓ	M	
Type	D	Slot Width	Selection							0.5mmIncrement					
HPU	15	4	4	5	6	6.35	8		0.5-2.0	12	12	6	3	M3	
	20		4	5	6	6.35	8	15							
	30		4	5	6	6.35	8	20							
	20		4	5	6	6.35	8	15							
	30	5	5	6	6.35	8	10			20	13	7	3	M3	
	40		5	6	6.35	8	10								
	30		5	6	6.35	8	10	20							
	40		5	6	6.35	8	10	20							
	50	6	5	6	6.35	8	10	12		25	14	8	3	M3	
	40		5	6	6.35	8	10	12							
	50		5	6	6.35	8	10	12							
	60		5	6	6.35	8	10	12							
60	8	5	6	6.35	8	10	12	25	20	10	5	M4			
60		5	6	6.35	8	10	12								

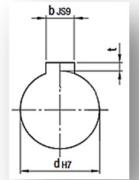
FLAT BELT PULLEYS / IDLERS



ITEM	NO OF GROOVES	DIA	TYPE	HUB	BORE TYPE	COATING
FPU	2 3 4 5 6	" - "	"F" - FLANGE TYPE "C" - CROWN TYPE "P" - PU INSERT TYPE	- NO HUB "1H" - ONE SIDE HUB "2H" - TWO SIDE HUB	- PILOT BORE "φN" - DIA WITH NEW JIS "φP" - DIA WITH OLD JIS "T" - SCRUB SCREW TYPE "S" - SPLIT HUB TYPE "B" - BEARING INSERT	"WZ" - WHITE ZINC "GZ" - GOLD ZINC "B" - BLACKENING "P" - PHOSPHATING "C" - CHROME COATED "N" - NICKEL COATED "PU" - PU COATED (MIN 5t)

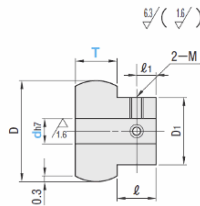


Key Groove Dimension				
New JIS (B1301) Key Groove Dimensions				
Nominal	dH7	bJS9	t Tolerance	
N8	8	0.015	3	1.4
N10	10	0		0.1
NK10	10		4	1.8
N12	12	0.018		0
N15	15	0	5	2.3
N20	20	0.021		6
N30	30	0	8	2.8
N40	40	0		0
		0.025	12	3.3
		0		0



Part Number	dH7													T	D1	ℓ	ℓ1	M	L		
Type	D	P (Round Hole+Tap) Selection						N(Key Groove + Tap) Selection						Selectable							
FPU	15	5	6											6	12	8	4	3	T+2		
	18	5	6	8										11							
	20	5	6	8				8						21							
	28		6	8	10			8						27							
	30		6	8	10	12		8	10	12				32							
	35			8	10	12			10	12				6	20						
	40			8	10	12			10	12				11							
	45				10	12			10	12				16							
	50				10	12			10	12				21	30	12	6	5			
	60				10	12	15		10	12	15			27							
80					15	20	30			15	20	30	32	50							
100						20	30	40			20	30	40	60	16	8	8				

CROWN TYPE



Part Number	dH7													T	D1	ℓ	ℓ1	M	L		
Type	D	P (Round Hole+Tap) Selection						N(Key Groove + Tap) Selection						Selectable							
FPU	15	5	6											6*	12	8	4	3	T+2		
	18	5	6	8										11							
	20	5	6	8				8						21							
	28		6	8	10			8						27							
	30		6	8	10	12		8	10	12				32							
	35			8	10	12			10	12				6*	20						
	40			8	10	12			10	12				11							
	45				10	12			10	12				16							
	50				10	12			10	12				21	30	12	6	5			
	60				10	12	15		10	12	15			27							
80					15	20	30			15	20	30	32	50							
100						20	30	40			20	30	40	60	16	8	8				